

Replace compression depth sensor

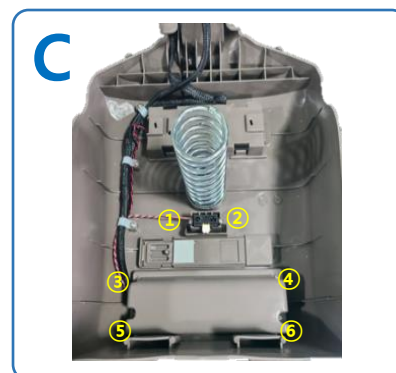
INNOSONIAN



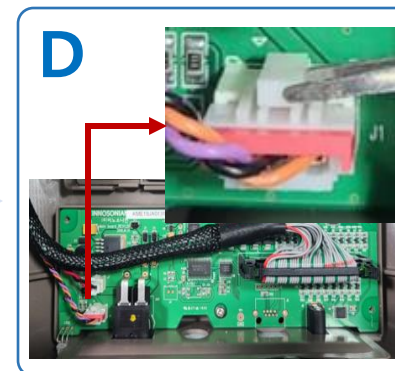
A. Prepare Brayden for replacement



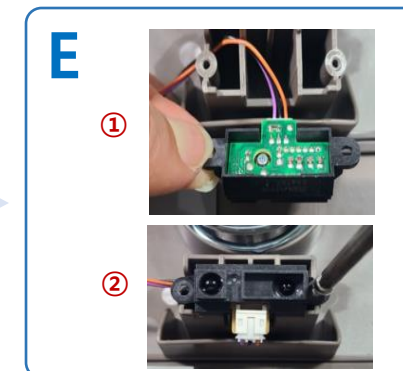
B. After taking off the body skin, detach rib frame.



C. After removing the screws in the numbered order, open main board cover

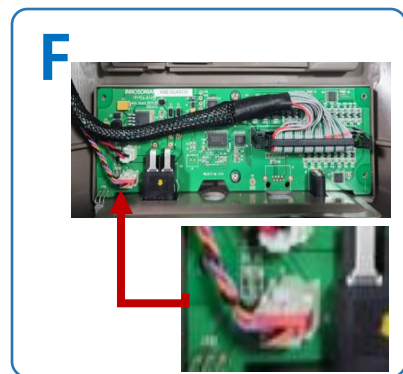


D. Detach compression depth sensor cable's connector from the main board, remove the compression depth sensor.

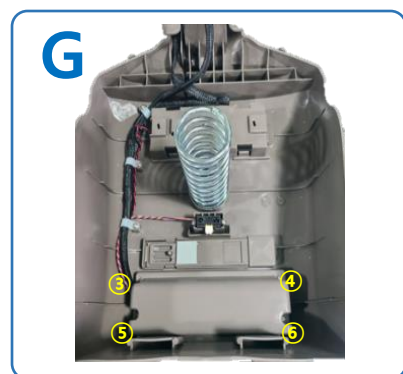


E. Insert new compression depth sensor as shown in the picture and fix with screws.

(Pay attention the direction of sensor connector)



F. Insert new compression depth sensor's connector to the main board.



G. Close main board cover and fasten the screws one by one.



H. Connect the rib board as it was the first time.



I. Put body skin back